

Reassemble pump vice versa.  
The NIROSTAR TYP 2001 series comes without lateral discs.



Impeller Pump Typ 2000-A



**Mortal danger - electric shock!**  
Disconnect pump from power supply prior to working in it!

## Step 1



Release screws, remove cover.

impeller replacement 1

## Step 4



Remove O-ring, lateral disc with whole and lid from the rear side. Release safety ring and press out shaft seal.

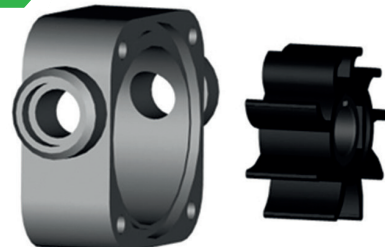
## Step 2



Remove lateral disc (without hole) and O-ring.

impeller replacement 2

## Step 5



Press Impeller out of housing.

impeller replacement 4

## Step 3



Remove housing with Impeller.

impeller replacement 3

## Step 6



Housing with narrow shoulder on top, turn Impeller counter clockwise into housing. Push Impeller as far up as possible.

impeller replacement 5



Reassemble pump vice versa.  
The NIROSTAR TYP 2000 series comes without lateral discs.